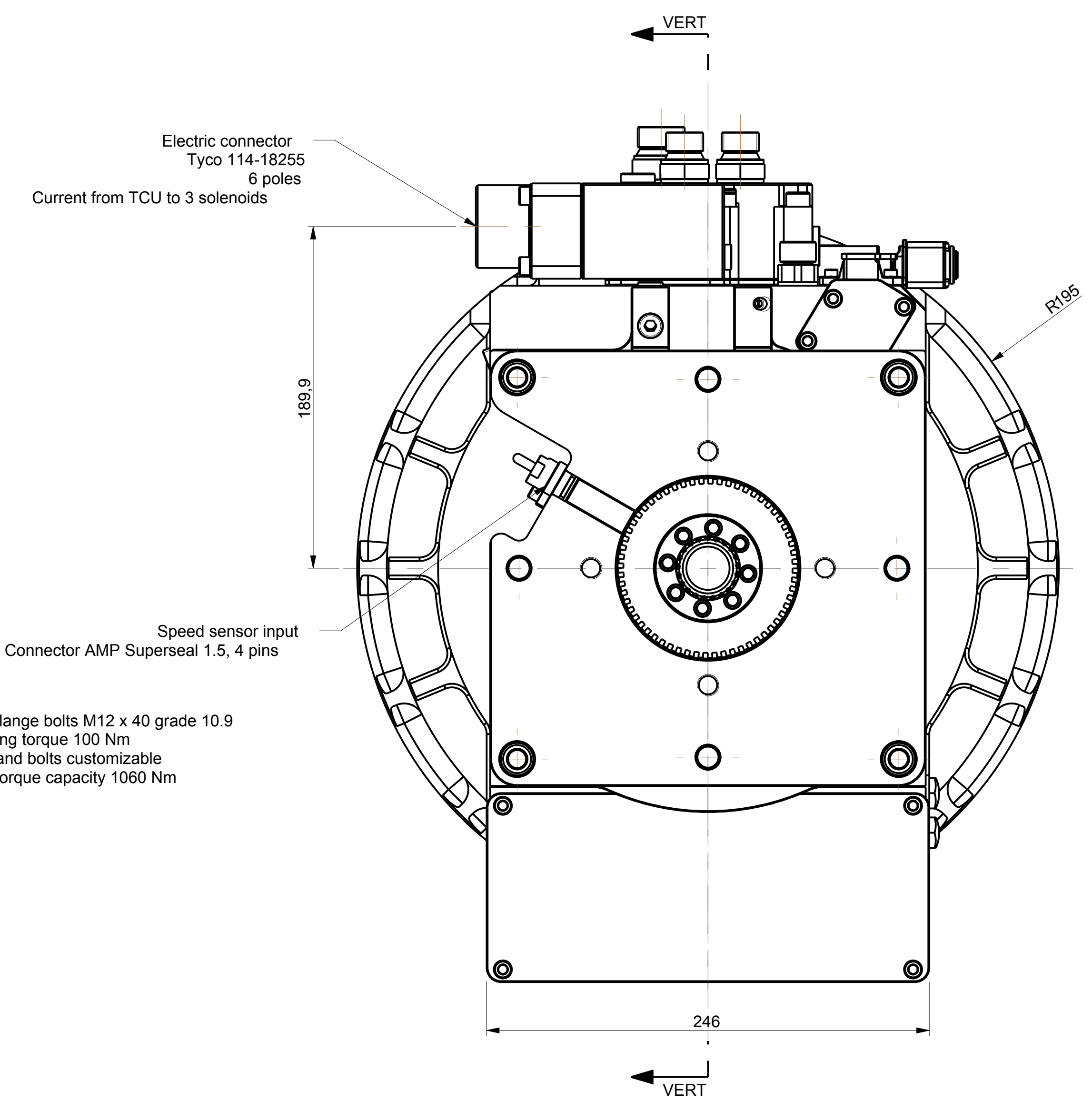
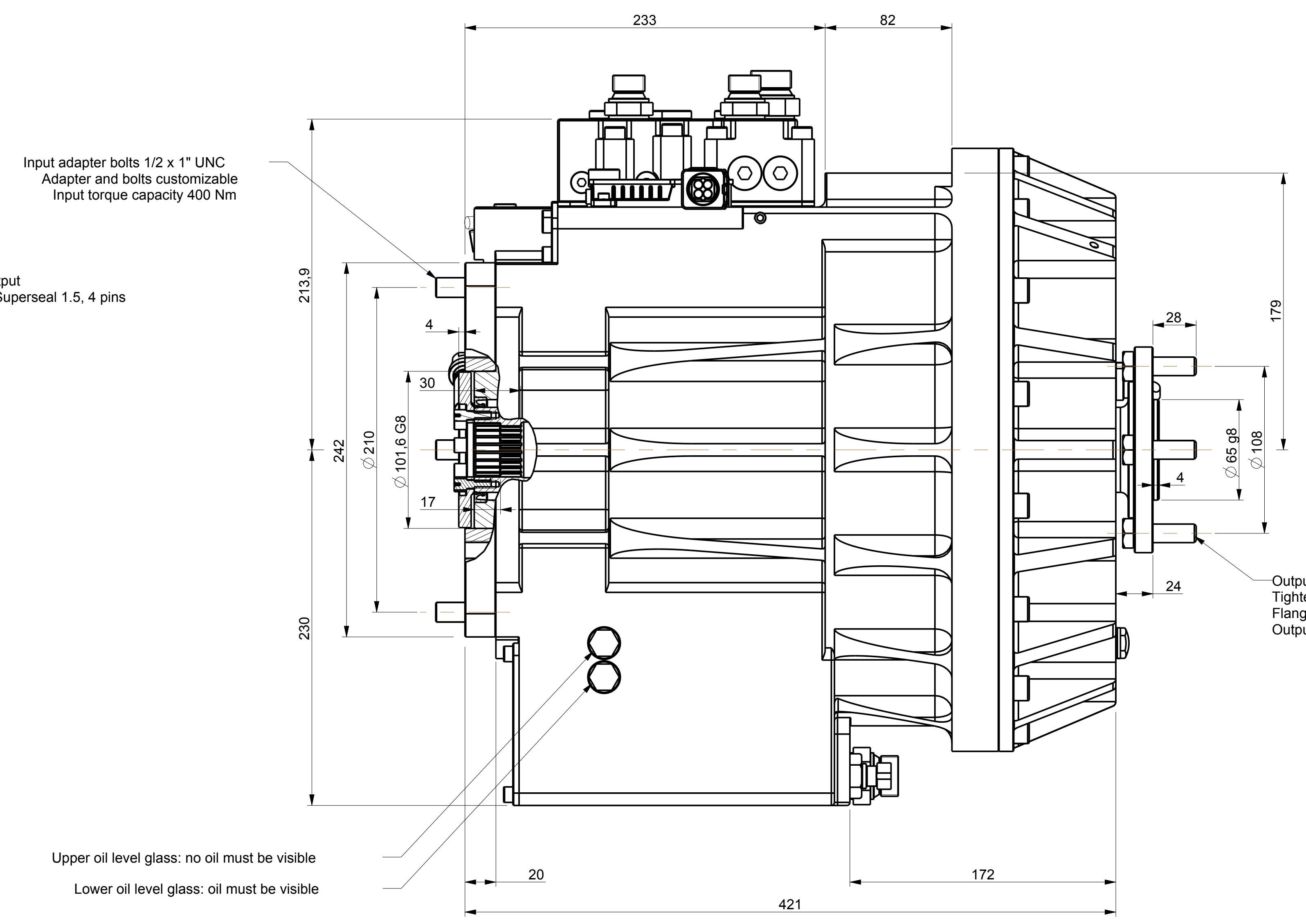
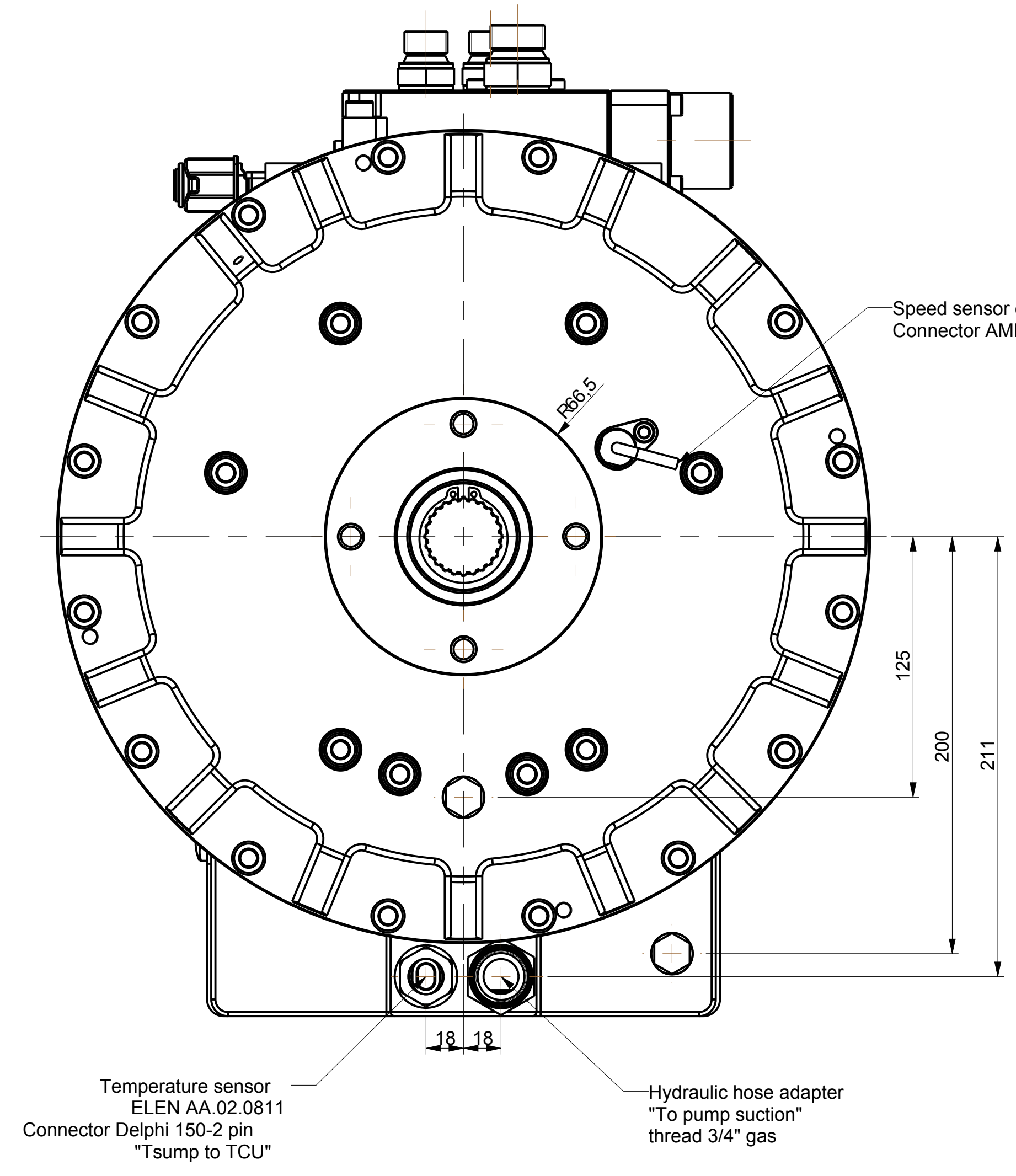
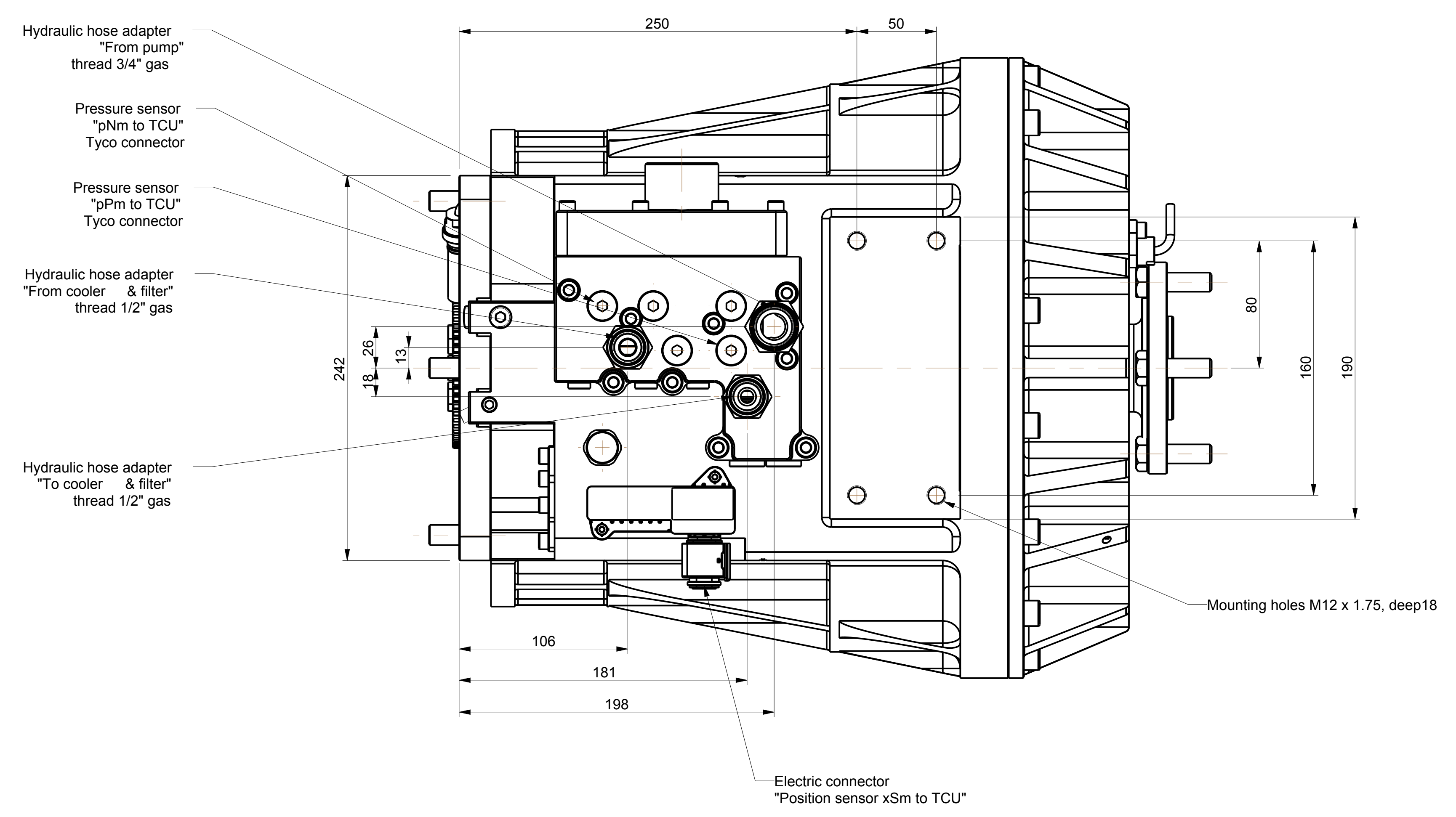


Rev No	Revision note	Date	Drawn	Checked
	Updated Sept 15, 2017			

CONFIDENTIAL  
All rights reserved.  
Reproduction of this  
drawing to third  
parties is prohibited.



SECTION VERT-VERT



SPLINE DATA INPUT SHAFT

INTERNAL EVOLUTE SPLINE	
per DIN 5480	34 x 1.5875 x30 x21 x9H
QUALITY CLASS	9
NUMBER OF TEETH	Z 21
MODULE	m 1.5875 (=16/32)
PRESSURE ANGLE	a 30°
PITCH DIA	d 33.3375
BASE DIA	db 28.871
FORM DIA	dF 34.775
TIP DIA	da 31 - 31.1
ROOT DIA	df 35 - 35.1
TIP CHAMFER	f 0.238
ROOT FILLET	r fp 0.254
PIN DIA	DM 2.75
MEASUREMENT BETWEEN PINS	MI 29.236 - 29.298
N° OF TEETH TO BE MEASURED	k 4
TOOTH WIDTH OVER k TEETH	Wk 16.667 - 16.694

TOLERANCING	GENERAL TOLERANCES
ISO 8015	ISO 8015
ISO 8015	ISO 8015
ISO 8015	ISO 8015
ISO 8015	ISO 8015
ISO 8015	ISO 8015
ISO 8015	ISO 8015
ISO 8015	ISO 8015
ISO 8015	ISO 8015
ISO 8015	ISO 8015
ISO 8015	ISO 8015
ISO 8015	ISO 8015

Material	Heat treatment	Hardness	Weight
Designed by FDM	Checked by FDM	Approved by, date FDM, 04 Oct 2016	Filename SV230
Scale 1:2		Size A0	DIMENSIONS ARE IN MM
<b>MAZARO</b>		Single stage Variator SV230	
SV230 INSTALLATION		Version 00	Sheet 1/1